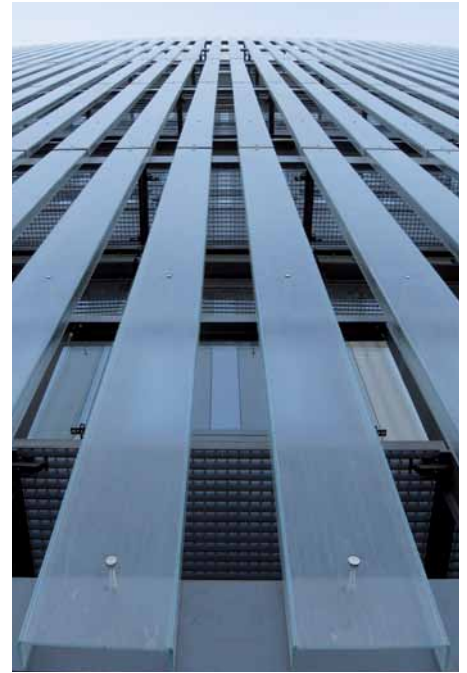


## Profile glass facade: Technical national library, Prague (CZ)



|                  |  |
|------------------|--|
| Architect:       | Projektíl architekti s.r.o., Prague (CZ)             |
| General planner: | Helika a.s., Prague (CZ)                             |
| Owner:           | Technical University, Prague (CZ)                    |
| Installation:    | AlteCH s.r.o., Mladá Boleslav (CZ)                   |
| Product:         | AO-Flex® 25 mm fitting with U-profiled glass         |
| Glass structure: | tempered translucent U-profiled glass panels (LINIT) |
| Substructure:    | steel  |
| Surface area:    | up to 5 m long profile glass panels                  |
| Completed:       | 2008   |

